

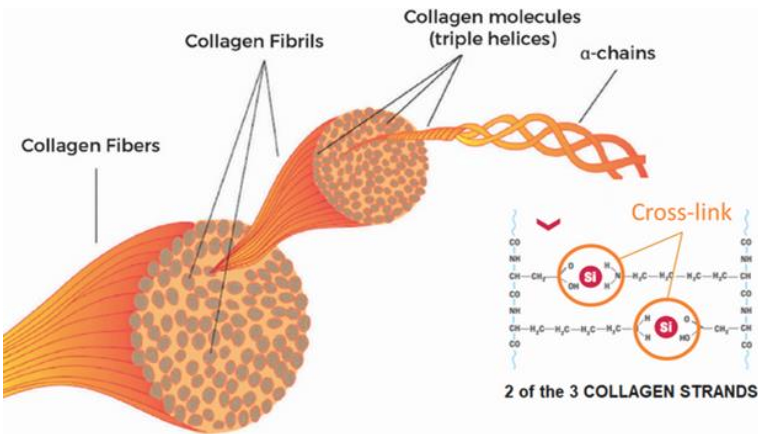


POULSIL

THE BIO-ACTIVE SILICIUM



The Power of Si



Poulsil is a patented bioactive silicium (Si) that plays an essential part in collagen synthesis.

Silicium(Silicon)

- ❖ The component mineral of collagen fibrils cross-linkages.
- ❖ Contributes to bone strength and elasticity of connective tissues.
- ❖ Essential mineral in collagen synthesis and bone mineralization.

Different forms of Silicium



Chemical element



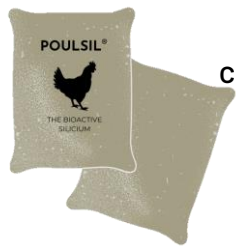
Silicium dioxide, limited bio-availability in the environment (Beer; Cereals)



Synthetic form

Modified Silicium dioxide (Poulsil)

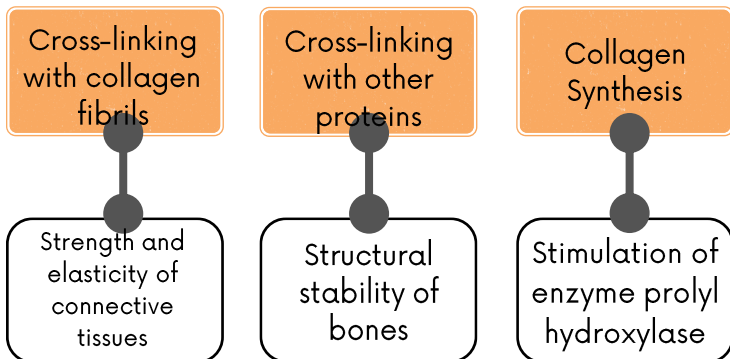
Formulated to provide highly bio-available silicium



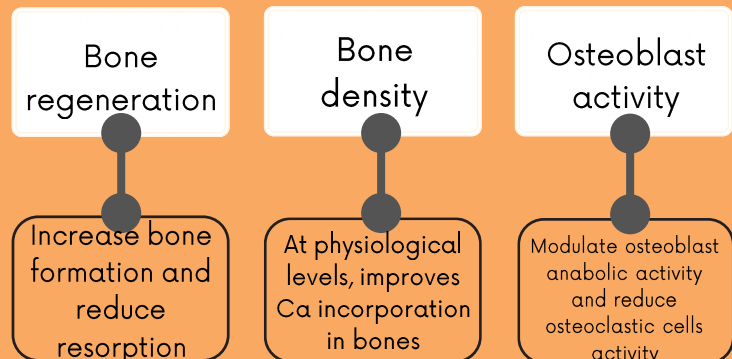
In-vivo conversion

Bioavailable silicium

Si as a vital component of collagen



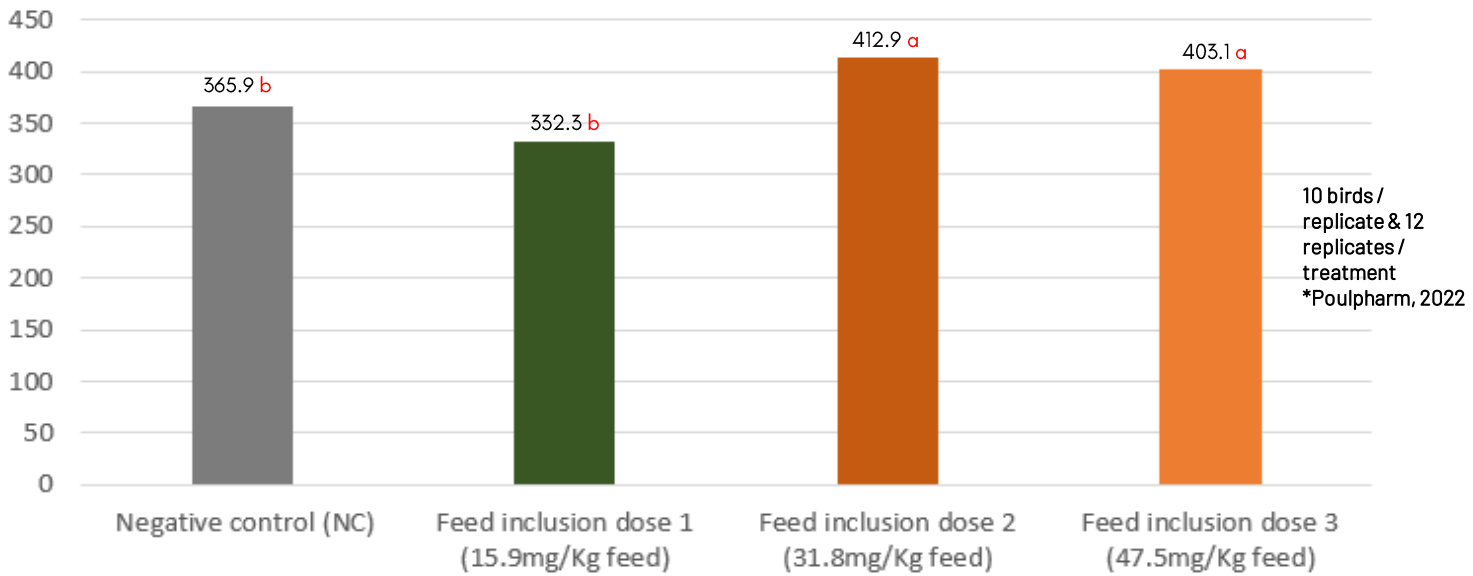
Si in bone remodelling



BONE HEALTH TRIAL – Bone strength

Fracture force

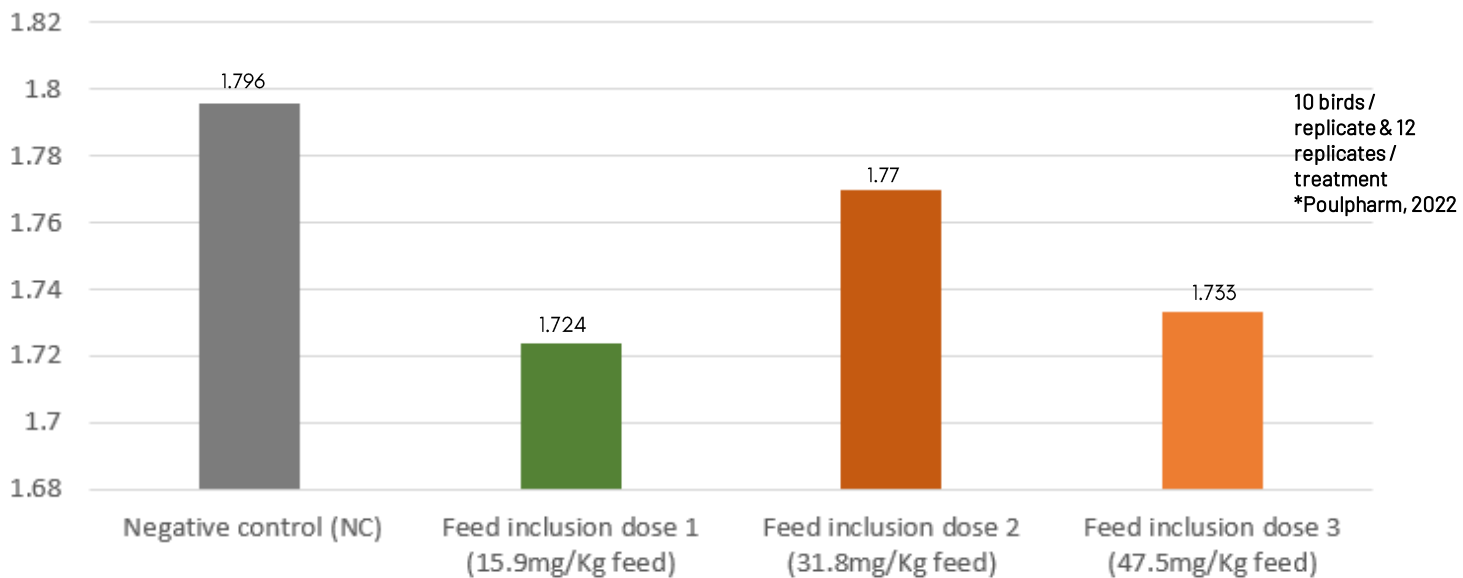
Minimum force required to cause bone fracture



Poulsil significantly improved bone strength at 31.8 mg/Kg inclusion in feed.

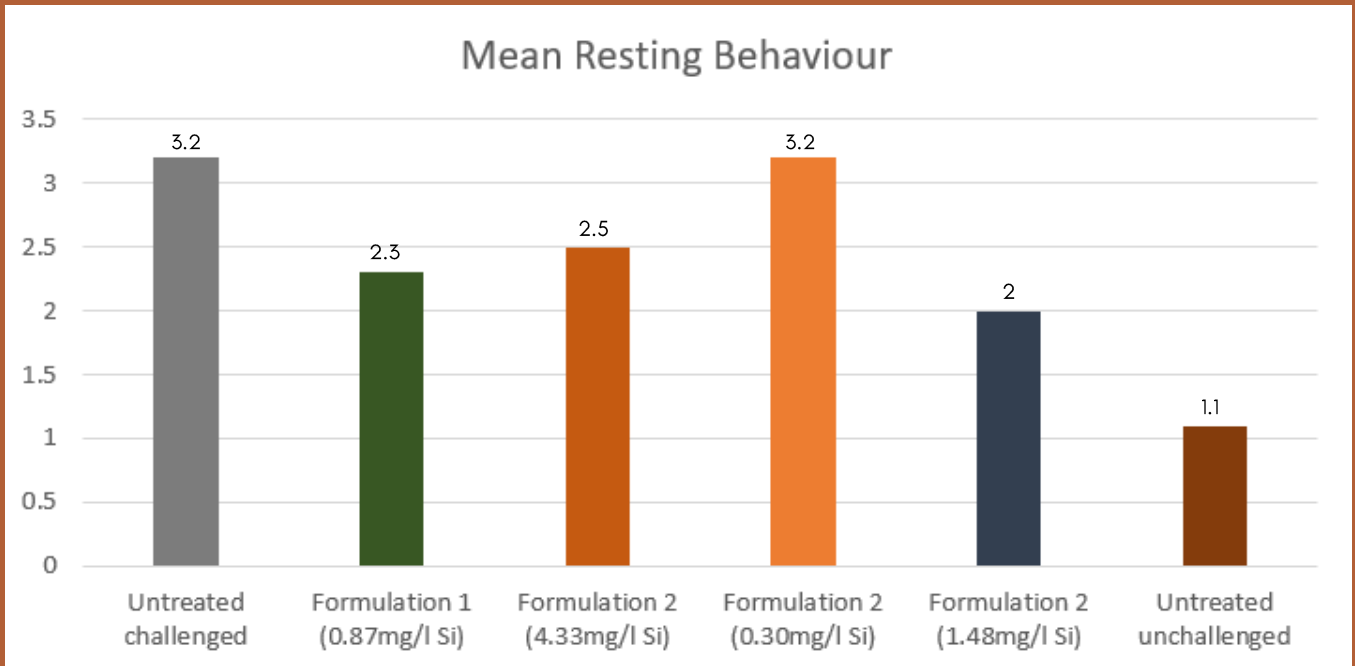
PERFORMANCE TRIAL

Feed Conversion Ratio (FCR) 0-49 days



Poulsil supplementation significantly improved the FCR at minimum dose of 15.9 mg/Kg inclusion in feed.

WELFARE TRIAL

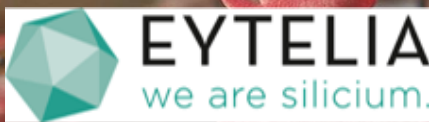


P-value	Reference	0.125	0.218	0.926	0.027	<0.001
---------	-----------	-------	-------	-------	-------	--------

Poulsil significantly improved the welfare status of birds.

Resting behavior was measured after inducing gouty arthritis by intra-articular injection of sodium urate. It is measured by counting on 12 different times, with 10 minutes interval, the number of birds with the eyes closed. There were 8 birds per replicate and 3 replicated per treatment.

Manufacturer:



Distributor:



Application (Broiler, Breeder, Layer & Turkey)

Recommended dosage : 150g/ton
(21.4 mg Si /Kg of feed)